



to the *Pointe* Midland Festival Ballet Newsletter

Volume XVI, No. 1
Summer 2009
Page 2 Share Passion
of 16th Season
Page 4 Info Available
on Fall Classes
Page 5 'The Nutcracker'
Auditions Scheduled

"BRINGING THE BEAUTY OF BALLET TO THE BASIN"



MFB Steps Up To New Location

*The School of MFB moves
to Suite C-1 in the Courtyard*

The Board of Directors for Midland Festival Ballet has announced the School of MFB, currently located in Suite A-7 of the Colonnade Shopping Center at Loop 250 and Garfield Street will be moving to new studio space early this fall. A lease has been signed for over 4,000 square feet of space in Suite C-1 (next to Fast Signs) at the Courtyard Shopping Center on the northeast corner of Loop 250 and Midkiff Drive. Plans are currently being finalized for "build out" of the facility.

The lease for the former Coleman Academy, a private dance studio where the School of MFB is now located, expires in October. First organized as a non-profit performing company in 1993, Midland

Festival Ballet has grown along with Coleman Academy. After opening her private dance studio in the early 1990s, Judy Coleman served as Artistic Director until Susan Clark was added as Ballet Mistress in 1999 and later named Co-Artistic Director. Several other teachers and guest choreographers have taught for the school over the past two decades and the MFB Company has participated in Regional Dance America/Southwest (RDA/SW) over the past decade to further its development.

In Spring 2007, the MFB Board of Directors identified three goals in its long range planning for the organization:

- 1.) hiring an Executive Director,

Continued on Page 4

MFB Announces Productions for *"Feel the Passion"*

Now in its sixteenth year, the Board of Directors for Midland Festival Ballet has announced the 2009-10 season entitled "Feel the Passion" to include productions of the following:

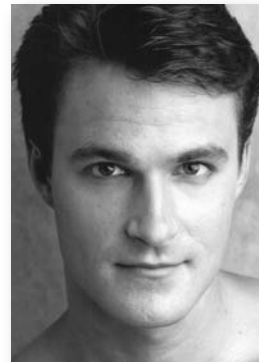
- "The Nutcracker" by Peter Tchaikovsky scheduled Saturday, December 12, at 7:30 p.m. and Sunday, December 13, at 2:30 p.m. in Lee High School Auditorium.

- "Cinderella" Fairy Tale Festival at 9 a.m. and 1 p.m. with Midland Independent School District elementary students in Midland High School Auditorium on Friday, February 19, 2010, and for the general public at 7:30 that same evening.

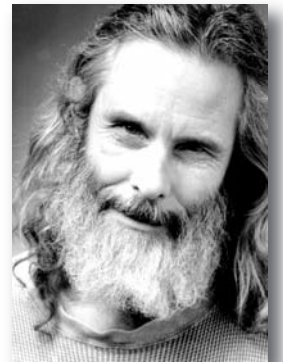
Continued on Page 3



Amy Fote



Nicholas Leschke



Johnny Simons

Join Us and 'Feel the Passion' for MFB



Membership and Sponsorships for the 2009-10 season (per MFB By-Laws) are now available at the following levels:

Dancer Class: Company Members (Senior/Junior/Apprentice Level) – by invitation or audition; annual dues are \$50 plus \$25 per month for 10 months.

Family Class: Families with one or more non-company dancer(s) in MFB productions; annual dues are \$50 for one dancer; \$75 for two or more dancers; also requested to serve on 'Guild' Committee(s).

Supporter Class: Contributors with a MFB dancer OR Family Class members giving above annual dues – any amount from \$1 to \$999.99*

Benefactor Class: Contributors without a MFB dancer OR Family Class members giving above annual dues – any amount of \$1,000 or more **

BENEFITS for Dancer and Family Class include:

- Free subscription to MFB's newsletter "To the Pointe," providing information about performances and upcoming events
- Membership T-shirt
- Collectible Nutcracker poster
- Dancer recognition for performance participants, and
- Advance ticket purchases.

Supporter and Benefactor Class Sponsorships as described above are further divided into levels of giving with additional benefits for those in the Dancer and Family Class as follows:

* **Trainee:** any amount

Apprentice: \$100 [program recognition at each performance]

Corps de Ballet: \$250 [6 tickets, or 2 tickets to each season performance; program recognition at each performance]

Demi-Soloist: \$500 [6 tickets, or 2 tickets to each season performance; program recognition at each performance; invitation to guest artist reception(s)].

** **Soloist:** \$1000 [12 tickets, or 4 tickets to each season performance; program recognition at each performance; invitation to guest artist reception(s)].

Premier Danseur: \$2,500 [18 tickets, or 6 tickets to each season performance; program recognition at each performance; invitation to guest artist reception(s)].

Danseur Noble: \$5,000 [24 tickets, or 8 tickets to each season performance; program recognition at each performance; invitation to guest artist reception(s).]

Prima Ballerina: \$10,000 [24 tickets, or 8 tickets to each season performance; program recognition at each performance; invitation to guest artist reception(s).]

Prima Ballerina Assoluta: \$15,000 [30 tickets, or 10 tickets to each season performance; program recognition at each performance; invitation to guest artist reception(s).]

Membership forms will be available at the School of MFB and 2009-10 MFB Season Brochures were mailed earlier in August. Sponsorship contributions may be mailed to Midland Festival Ballet at P.O. Box 52034, Midland, TX 79710. Don't forget to check out MFB's website: www.midlandfestivalballet.org for additional information.

Season Ticket Prices Set

Season ticket prices for 2009-10 will be \$42 for adults and \$28 for youth/students and senior citizens. They include one ticket to one performance of each of the three productions with priority seating after sponsor tickets are reserved and before individual/group tickets are sold to the cast and general public.

Individual performance ticket prices will be as follows:

Adults: \$20 for "The Nutcracker" and \$15 each for "Cinderella" Fairy Tale Festival and the Spring Gala

production;

Youth/Students/Senior Citizens: \$15 for "The Nutcracker" and \$10 each for "Cinderella" Fairy Tale Festival and the Spring Gala.

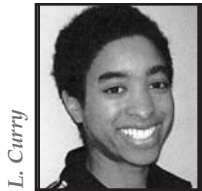
Groups of 15 or more for each performance receive a \$2 discount per ticket.

Season Tickets may be ordered using the MFB 2009-10 Season Brochure. Individual Performance Tickets may be purchased online at www.midlandfestivalballet.org after November 2, 2009. For more information, call the MFB office at 686-0071.



MISSION STATEMENT: *The mission of Midland Festival Ballet is to develop the skills and expand the artistic potential of young dancers, to provide quality performance opportunities for them, and to further public understanding and appreciation of the art of classical ballet as a vibrant part of the cultural mix of the community.*

Company News



L. Curry



J. Goodman



Jean-Paul Comelin

Workshops Scheduled

Several workshops for MFB Company Members are scheduled this fall. **Lauren Curry** and **Joseph Goodman** will both create new works during the week of August 16-23. Susan Clark will restage **Rob Davidson's** "Argyle Socks." Rob will come to Midland to coach his piece at a later date. **Mireille Favarel**, current Ballet Mistress of Milwaukee Ballet II will help stage **Jean-Paul Comelin's** work "Lux Aeterna" from October 9-12. Comelin, an international teacher and guest choreographer, will come to Midland October 15-18 to teach master classes and to coach his piece. His credits include artistic director of several notable companies such as Ballet du Nord, Ballet Arizona and Milwaukee Ballet.

All of the workshop pieces will be adjudicated for Regional Dance America/Southwest on February 3, 2010, and performed as part of MFB's Spring Gala May 1-2, 2010, in Wagner and Brown Auditorium at the Allison Fine Arts Center on the Midland College campus.

Company Auditions Planned for September

Midland Festival Ballet will conduct Company Auditions on Saturday, September 12, at the School of MFB (Location: TBA). Requirements are as follows:

Junior Company/Apprentice Level:

- At least two years of ballet
- Pointe technique (optional)
- Minimum age: 10 years

Senior Company

- Four years of ballet
- Minimum age: 12 years
- Pointe technique required

Following the audition, Susan Clark, Artistic Director will inform Company Members of their selection to dance with Midland Festival Ballet, the performing company of the School of MFB (formerly Coleman Dance Academy). For more information, call 682-2653.

Staying on Their Toes

Company Members stayed active and continued their dance training over the summer months. **Louisa Chapman** and **Victoria Gilmore** attended the **Joffrey Midwest Workshop** in Flint, Michigan. Louisa also attended **Kaatsbaan** in upstate New York as recipient of a RDA/SW Scholarship. Former Company Member **Emily Chapman** and **Tyler Rhoads** spent six weeks at **Burklyn Ballet Theatre** in Vermont while four other MFB Junior and Senior Company Members attended the **Milwaukee Ballet School** in Wisconsin, including **Rachel Hickman, Olivia Lerwick and Hanna Pierce** for three weeks from July 13-31 and **Lauren Laughlin** for six weeks from June 22 to July 31. **Pearl Pierce** attended three weeks of dance training at Los Angeles area studios during late July and early August. Over the past decade, as few as two and as many as nine dancers from Midland have attended the summer training in Milwaukee where **Susan Clark** has taught during the summer months.

MCC Ladies to See Performance

Midland Festival Ballet Company Members have been invited again this year to perform for the Midland Country Club Ladies Association on Friday, October 16, at 12 noon. **Amy Fote** and **Nicholas Leschke**, Principal Dancers with **Houston Ballet** will perform the Pas de Deus from "Madame Butterfly."

'Feel the Passion'

Continued from Page 1

- Spring Gala on Saturday, May 1, 2010, at 7:30 p.m. and Sunday, May 2, 2010, at 2:30 p.m. in Wagner & Brown Auditorium of the Allison Fine Arts Center at Midland College.

Additional community presentations will include Septemberfest at Museum of the Southwest on Sunday, September 13, and Celebration of the Arts at Centennial Plaza on Sunday, May 16, 2010. Performance times for each will be announced at a later date.

Guest artists for this year's productions include Principal Ballerina **Amy Fote** of the Houston Ballet dancing the role of Sugar Plum Fairy in "The Nutcracker" with **Nicholas Leschke**, also of the Houston Ballet performing as the Cavalier. **Johnny Simons** of the Hip Pocket Theatre in Fort Worth will return as Herr Drosselmeyer. The Midland-Odesa Symphony directed by Diane Hilbert will provide live musical accompaniment for "The Nutcracker" performances. Susan Clark serves as Artistic Director for Midland Festival Ballet with Judy Coleman, Founding Artistic Director.

School of MFB News

Brochures About Fall Classes Available

Brochures for the School of MFB classes during the 2009-10 school year are now available. Classes will begin on Monday, August 24. Watch for ads in the *Midland Reporter Telegram* or check the MFB website at www.midlandfestivalballet.org for more information. The ads promote the School of MFB (formerly Coleman Academy) as the 2009 favorite dance school in Midland, an honor received four of the last five years.

Susan Clark serves as Artistic Director (School Director) with **Judy Coleman**, Founding Artistic Director. Additional teachers for the upcoming year will include: **Jennifer Runnfeldt**, **Lauren Curry** and **Joseph Goodman**.

Jennifer is from Chicago, Ill., and previously attended the University of Iowa. She is completing a degree in Public



J. Runnfeldt



L. Curry



J. Goodman

Relations/Marketing and will also help the School of MFB with these skills.

Lauren taught outreach classes at Casa de Amigos last spring and will continue in that area in addition to providing Lighting and Technical expertise along with teaching and choreography. She received her dance training in Indianapolis, IN and graduated college in Boston, Mass.

Joseph began training at age 17 with director Thom Clower of Yuma Ballet Theatre in Arizona. After three years, he danced professionally with Greensboro Ballet, Fort Worth Dallas Ballet (now known as Texas Ballet Theatre), Paradise Ballet and has danced with many civic and pre-professional companies across the United States. He has also choreographed, taught master classes and served as Ballet Master with several notable companies.

Who's Got The Cheese?

These mice in the 2008 "Nutcracker" decide which one gets the cheese. "The Nutcracker" 2009 auditions will be held Saturday, September 12.



Summer Classes Sizzled

Summer classes were held during the month of June. **Princess Ballet Camp** for ages 3 to 6 engaged the preschoolers in dance during the early mornings for the first two weeks of June followed by guest teacher **Joseph Goodman** teaching the **Intermediate/ Advanced Levels**. Classes for the **Beginner and Intermediate Levels** during the last two weeks of June were taught by **Susan Clark**, School of MFB Director. Plan now to attend the classes offered next June 2010.

New Studios To Provide More Space

Continued from Page 1

- 2.) adding more teachers, and
- 3.) securing additional studio space.

The first goal was accomplished last July with the hiring of Jan St. Hilaire as Executive Director. Midland Festival Ballet also agreed last summer to take over Coleman Dance Academy, re-naming it the School of MFB. The second goal was accomplished with Ms. Clark being named Artistic Director and Ms. Coleman assuming the duties of Founding Artistic Director while other teachers – Lauren Curry, Joseph Goodman and Jennifer Runnfeldt – were hired to teach more classes. Thus, the long time need for additional space as a result of scheduling multiple classes while sharing single studio space became

top priority this past spring.

Plans for the "build out" include two studios, a reception and waiting area, two dressing rooms, restrooms and some storage. The floor formerly used by Ballet Midland may be available to MFB, yet costs to lay a "sprung floor" in each studio and place mirrors and barres are a major part of the expenses. A Ribbon Cutting and Open House will be scheduled in the fall for the opening of the new studio space.

Gifts to MFB, a qualified 501(c)(3) non-profit arts organization are fully tax-deductible. For information, contact **Jan St.Hilaire**, Executive Director at 686-0071 or by e-mail at mfballet@sbcglobal.net.

'Nutcracker' News

Deadlines Announced For Production

Once fall rehearsals for "The Nutcracker" are underway, several deadlines for activities occur related to the production. They include:

- **Membership**

Registration by Saturday, October 3, (in order to receive School of MFB T-shirt and dancer recognition);

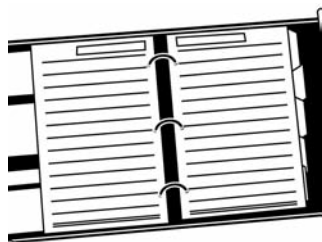
- **Season**

Sponsorships and Nutcracker T-shirt

Orders will be due on Saturday, October 17.

- **Program Ads** will be due on Saturday, October 31.
- **Flower Pre-Orders** deadline is Saturday, November 14.
- **DVD Pre-Order** should be turned in by Saturday, December 5.

Copies of order forms for each will be handed out at the parent (family) membership meetings in September and October and will be available at the School of MFB.



'Nutcracker' Auditions Planned for September

Auditions for "The Nutcracker" are scheduled on Saturday, September 12, at the School of MFB (Location: TBA). Times for each age group are as follows:

- 9:30 to 10:30 a.m.: Ages 5 – 7
- 10:30 to 11:30 a.m.: Ages 8-10
- 11:30 a.m. to 12:30 p.m.: Ages 11 – 12 (Bring pointe shoes)
- 1 to 2:30 p.m.: Age 13 to adult (pointe work required)
- 3 to 5 p.m.: Roles of Clara and Fritz

Parents interested in performing in "The Nutcracker" as Party Parents, please contact Judy Coleman, Founding Artistic Director at 682-2653.

Dancers from other studios and communities throughout the Permian Basin are welcome to audition and perform with MFB.

Cast lists will be posted by Friday, September 18. Rehearsals are scheduled weekends during the fall until technical rehearsals begin one week prior to performances. For more information, call 682-2653 (studio) or 686-0071 (office) or check the website at www.midlandfestivalballet.org.

An Inspiring Moment

This dancer in the 2008 production of "The Nutcracker" inspired a younger generation of ballet dancers.



Meetings Set For Parents

Fall membership (parent) meetings for those families with children dancing in "The Nutcracker" will be held at 2:30 p.m. on Sunday, September 27, and on Sunday, October 18, in the library at Midland Classical Academy located at 5611 N. Whitman.

Rehearsal schedules for September and October plus contracts will be handed out at the first meeting. Committee signups will also be available so parents can volunteer with the production. The second meeting will include rehearsal schedules for November and December and will offer continued opportunities for volunteer involvement in the production. **The success of MFB performances is a direct result of volunteers.**

Plan to attend the meetings and get involved! There's a place for everyone!!!

Business of Ballet

New Board Members Start Their Terms

David Kleinbeck is serving as President of the MFB Board of Directors for the current season. He is a retired German teacher in the Midland school district and has supported several arts organizations in Midland through the years. He is now an enthusiastic leader with MFB.

New board members accepting three-year terms on the Board of Directors are **Roger Crawford, Libby Laughlin, Beth Qualia, David Vaughn, and John West**, and one-year term Junior League of Midland representative **Whitney Groves**. John Chapman, Bill McCullough and Carolyn Sutton have each completed their terms on the Board and will serve as Honorary Directors. THANKS are expressed to Steve McLaughlin for his leadership as President of the Board of Directors during the past season. Steve will now serve as Immediate Past President.

The Board of Directors oversees **Productions, Community Awareness and Fundraising** for MFB, a 501(c) (3) non-profit arts organization. Board membership consists of a variety of dedicated business and community leaders, parents and dancers, along with supporters of the arts.

Keeping It 'To the Pointe'

Midland Festival Ballet enters its sixteenth annual season with growth and change. Our desire to share our passion is evidenced by the addition of an Executive Director during the past year and a move to a new, larger home this year. We will now be able to share the passion for ballet with two studios located at the Courtyard Shopping Center at Midland Park, 4410 North Midkiff Road, Suite C-1. *Each step in the growth process is designed to make ballet accessible to more students.*

At the past year's Regional Dance America/Southwest Festival, MFB was lauded with the designation of **"Gala"** status and we strive to maintain that honor by offering outstanding performances this season. Susan Clark, Artistic Director, and Judy Coleman, Founding Artistic Director, together with the dancers, board members, volunteers, and financial supporters invite you to attend the MFB performances of the Christmas holiday tradition, *"The Nutcracker,"* the *"Cinderella"* Fairy Tale Festival production, Spring Gala and the School of MFB Spring Showcase performance.

On behalf of the Board of Directors, Company Members and staff, thank you for your generous support in past years. We hope you **"Feel the Passion"** of ballet through your attendance and support during the coming year as we make the change to our new location. There are many opportunities to volunteer and be involved during Season 16.

David Kleinbeck, President
2009-10 Board of Directors

2009-2010 Board of Directors

OFFICERS

President

David Kleinbeck

Immediate Past President

Steve McLaughlin

Secretary

Phyllis Peek

Treasurer

Reed Gilmore

DIRECTORS

Lael Cordes-Pitts, Past President

Roger Crawford

Robbyne Hocker-Fuller

Whitney Groves

Judy Lerwick, Past President

Carl Moore

Beth Qualia

Dr. Praveen K. Reddy

Deb Shaw

Violet Singh

Holly Stroman

David Vaughn

John West

STAFF

Artistic Director

Susan Clark

Founding Director

Judy Coleman

Executive Director

Jan St. Hilaire

HONORARY DIRECTORS

John Chapman, Past President

Pamela Hamm

Tatum Hubbard

Harris Kerr, Past President

Judi Lindquist, Past President

Bill McCullough

Joy Payton

Carolyn Sutton

Bill Warren, Past President

Honorary Sponsor Chair

Dr. Tulsi Singh

Past Honorary Sponsor Chairs

Frances Brown

Andrea and Richard Catania

John Chapman

Mary de Compiegne

The Late Harriet Herd

Patty Herd

Joanie Holt

Paul & Judy Lerwick

Board meetings are scheduled for 8 p.m. the fourth Mondays (except December) in the Community Board Room at Junior League of Midland, Inc. headquarters, 902 W. Dengar Ave. MFB Executive Committee meetings are scheduled for 12 noon on the second Thursdays of each month in the MFB office, 401 N. Big Spring St., Suite 510.

Phone number for the MFB office is 432-686-0071. Send e-mail to:

mfballet@sbcglobal.net

Kerr Wins Drawing for Trip

The Board of Directors celebrated MFB's 15th anniversary by sponsoring a drawing for a trip for two to see one performance of Houston Ballet's "Swan Lake" in mid-June. The winning ticket was drawn during intermission at the Sunday, April 26, Spring Gala performance. Long time MFB member **Vicki Kerr** was the "lucky" winner. The trip package included airfare for two, one night's lodging at the historic Lancaster Hotel (within walking distance of the downtown Wortham Center), a back stage tour with Amy Fote, Principal Dancer and a pair of signed pointe shoes. Ticket donations for the raffle totaled over \$6,000 of support for MFB. Thank you!

SAVE THE DATE...

of Thursday, October 15, for "An Intimate Italian Evening" at Midland Country Club. Invitations will be mailed in September.

Dr. Tulsi Singh Honorary Chair

Dr. Tulsi Singh is serving as the 2009-10 Honorary Sponsor Chair for Midland Festival Ballet during this 16th annual season. He has been a previous sponsor of MFB and is an active supporter of all the arts in the community. MFB appreciates Dr. Singh's willingness to lead the way to encourage others to support the ballet. Thank you, Dr. Singh!

Midland Festival Ballet 2008-09 Sponsors

(As of June 30, 2009)

Prima Ballerina Assoluta

Arts Assembly of Midland
Mr. & Mrs. John Chapman
EOG Resources, Inc.
Paul & Judy Lerwick
Texas Commission on the Arts

Prima Ballerina

Mr. & Mrs. Jack E. Brown/Communities
Foundation of Texas
Hahl Proctor Charitable Trust
Mr. & Mrs. Steve McLaughlin
Midland Reporter-Telegram
Mr. & Mrs. Cy Wagner/Communities
Foundation of Texas

Danseur Noble

Abell-Hanger Foundation
Chaparral Bolt & Supply
Community National Bank
John & Maureen Cox Foundation
The Helen Greathouse Charitable Trust
The Prairie Foundation

Premier Danseur

Mary de Compiegne
Cotton, Bledsoe, Tighe & Dawson
Mrs. Robert D. Fitting
Mary B. Kennedy
Mr. & Mrs. Sam Lyssy
Dr. & Mrs. Praveen K. Reddy
Mr. & Mrs. Roger Rusert

Soloist

CHEVRON
Drill Collar Inspection Services, Inc.
Mr. & Mrs. Gaylon Howard
Junior League of Midland
Kinder Morgan Foundation
Mr. & Mrs. Bill McCullough

Mr. & Mrs. Greg McDonald/
UBS Financial Services
Mr. & Mrs. James D. McLaughlin
Midland Country Club Ladies Association
Dr. & Mrs. David Orr
Mr. & Mrs. David Smith
Mr. & Mrs. Steven Weatherl

Demi-Soloist

Nancy R. Anguish
Mr. & Mrs. G.W. Brock
Ms. Michelle Brock
Karmen Hendrix Bryant
Mary Lou Cassidy
Mr. & Mrs. Richard Catania
Mr. & Mrs. George E. Clark
Mrs. Jaclyn Comola
ConocoPhillips
Mr. & Mrs. James F. Devenport
Mr. & Mrs. M. Scott Foster
Mr. & Mrs. Reed Gilmore
Mrs. Elizabeth Greaves
Mr. & Mrs. Michael Grella
Mr. & Mrs. Tevis Herd
Jack Hickman/Shelley Wright
Joanie Holt
Mr. & Mrs. Curtis Horn
Dr. Pamela Howell
Mr. & Mrs. Kevin Laughlin
Mr. & Mrs. William Marshall
Mineral Technologies, Inc.
Permian Basin Area Foundation
Bob & Phyllis Cowan Fund
Mr. & Mrs. Wes Perry, Jr.
Victoria Printz
Rainbow Press, Inc.
Charles W. Seltzer, Attorney at Law
Mr. & Mrs. Hughly Todd
Mr. & Mrs. Don Tyler
Mr. & Mrs. David Vaughn
Dr. & Mrs. Eric Venegas
Mr. & Mrs. James J. Woodcock

Corps de Ballet

Mr. & Mrs. Drew Anderson
Mr. & Mrs. John D. Anderson
Suzy Boldrick
Mr. & Mrs. Robert J. Boomer
Mr. & Mrs. Kenneth Borgen
Mr. & Mrs. Corky Bosworth
Mr. & Mrs. Leonard Busby
Mr. & Mrs. Frank Kell Cahoon
Mr. & Mrs. Don Carruth
Mr. & Mrs. Bill Cozart
Mr. & Mrs. Max Curry
Mr. & Mrs. William Dingus
Mr. & Mrs. James Elliott
Mr. & Mrs. Terry Fields
Mr. & Mrs. Randy Ford
Dr. & Mrs. Keith Graumann
Ms. Paula Gutierrez
Mrs. Mary W. Hardie
Mr. & Mrs. Ramand Heeraman
Mr. & Mrs. Kevin Hickey
Jim Hill Insurance
Mr. & Mrs. John F. Kennedy
Mr. & Mrs. David Kleinbeck
Mr. & Mrs. Buddy Kootz
Mats Lennerhagen/Donna Busky Lauher
Lorri Lyon
Ms. Suzanne Martin
Dr. & Mrs. Joseph Oei
Mr. & Mrs. Lewis O'Neal
Mr. and Mrs. Larry Pitts
Mr. & Mrs. Terry Rhoads
Mrs. Dorothy Rowe
Shull Properties, LTD
James Sidebottom/Debbie Woodcock
Dr. and Mrs. Tulsi Singh
Mr. & Mrs. James Small
Rev. & Mrs. Dale Stasney
Mr. & Mrs. Carl Stewart
Carolyn Sutton
Terry's Kids Shoes
Mr. & Mrs. Gary Walker
Mr. & Mrs. Max Wright

For sponsorship information, call 686-0071 or visit the MFB website at www.midlandfestivalballet.org



P.O. Box 52034
Midland, TX 79710

www.midlandfestivalballet.org

RETURN SERVICE REQUESTED

Non-Profit Org.
U.S. Postage
PAID
Midland, TX 79701
Permit No. 148



'Feel the Passion'

JOIN
Midland Festival Ballet!

"Feel the Passion"
of MFB's 16th Season
Productions.

Various Levels of
Membership and
Sponsorships Available:

Dancer
Family
Supporter
Benefactor

For more information
call 686-0071
or visit www.midlandfestival-ballet.org

Photo Credit: Keese Photography