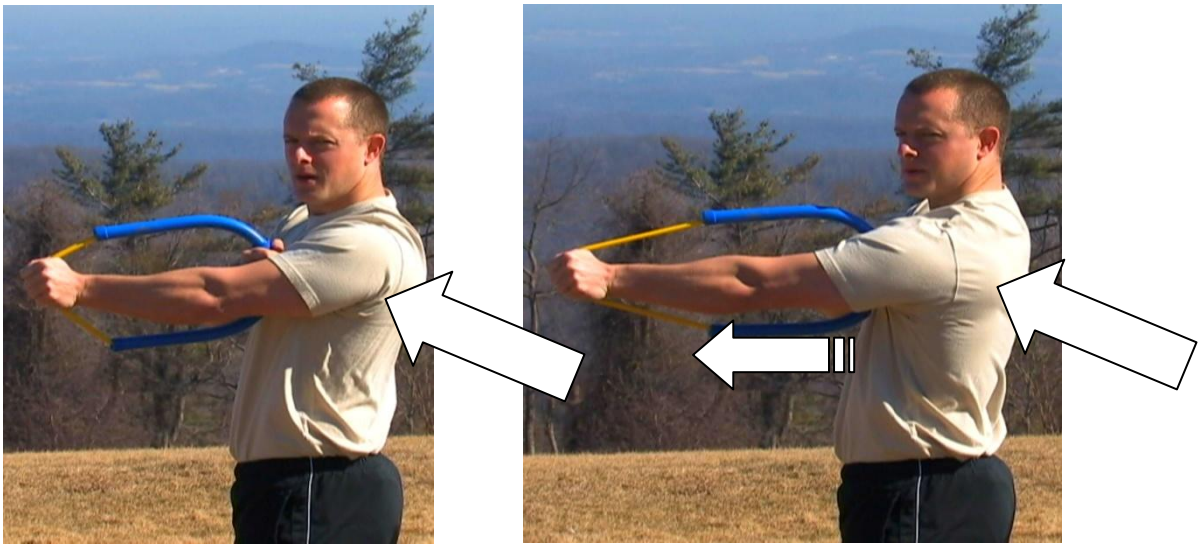


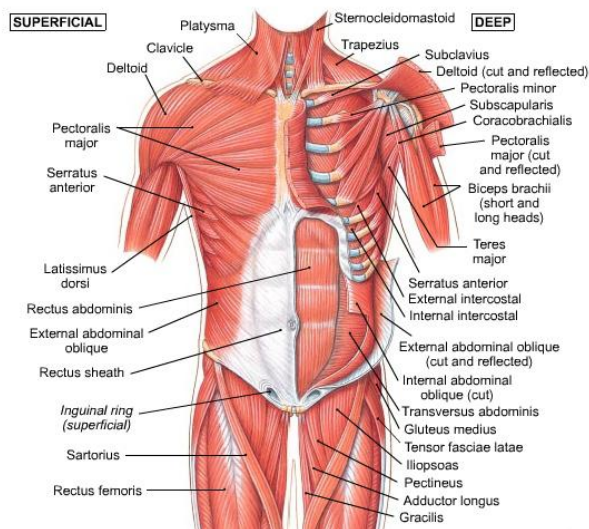
# Scapula Protraction

Hold the Cufline at the exercise shoulder with the bands facing forward.

Choose your resistance and keeping your exercise arm straight, press forward about 6 inches.



Exercises should be done for 2 sets of 10 repetitions, 3-4 times a week. All routines are done standing unless noted otherwise.



[www.cufline.com](http://www.cufline.com)

The primary muscle used in this exercise is the serratus anterior.